

CHAMP PULSE 503

MIG/MAG PULSE/DOUBLE PULSE/
SYNERGIC/TIG LIFT/MMA/GOUGING





INDEX

| | |
|-------------------|----|
| CHAMP PULSE 503 | 06 |
| SPECIAL FUNCTIONS | 08 |
| TEST | 09 |
| TECHNICAL DATA | 11 |



CHAMP PULSE 503

MIG/MAG PULSE/DOUBLE PULSE/
SYNERGIC/TIG LIFT/MMA/GOUGING



Champ Pulse 503 is a professional three-phase inverter welding power source with separate wire feeder for pulsed MIG MAG, double pulse, Short arc - Spray arc welding of materials such as carbon steel, stainless steel and aluminum.

Champ Pulse 503 versions also have MMA, TIG-LIFT DC and GOUNGING processes which make these models real multifunctional. The high duty cycle allows you to weld continuously in any heavy industrial application.



Rotating WF Support

Robust Wheels



The wire feeder, Feedlite 403, is equipped with a user – friendly control panel that ensures quick access to all parameters on the workstation.



SPECIAL FUNCTIONS

POWER ROOT AND POWER FOCUS



SPECIAL FUNCTIONS: POWER ROOT AND POWER FOCUS

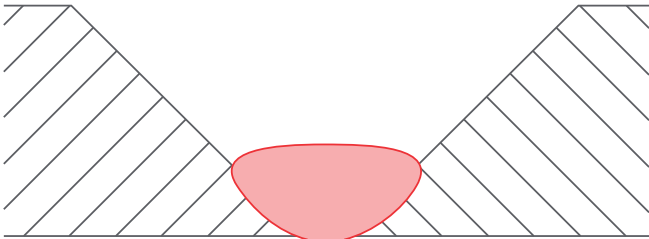


Power Root

The special Power Root function is a short arc transfer, controlled with a cold drop which ensures a very high quality during the root passes.

Features:

- Optimal first pass
- Quality of descending vertical welding
- Excellent operability
- Cold transfer of welding drop
- Perfectly jointed thin metal sheets
- Ideal for welding joints with large gaps



PG - Butt Weld
S355 - THK 3mm - GAP 1.5 mm

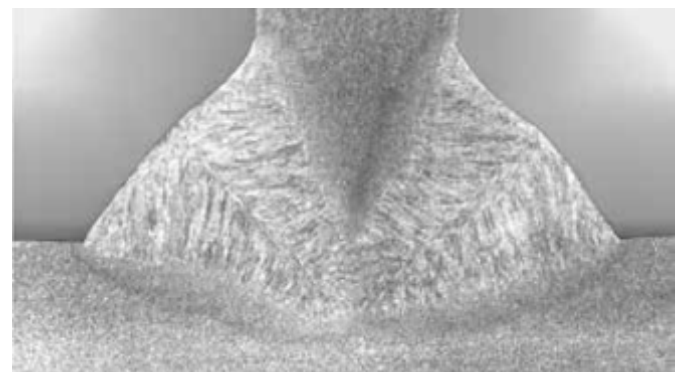
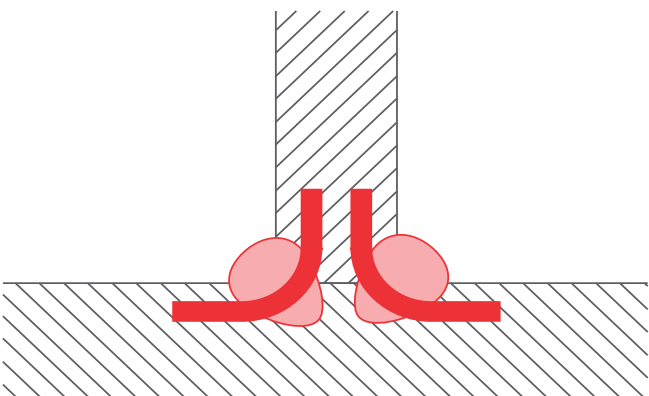


Power Focus

The special Power Focus function has been designed to reduce total welding costs, reducing the total number of joints to be welded.

Features:

- Higher penetration and lower risk of sticking
- Increased welding speed
- Higher arc stability even with long stick-outs
- Lower costs of joint preparation
- Reduced volumes of bevels to be filled



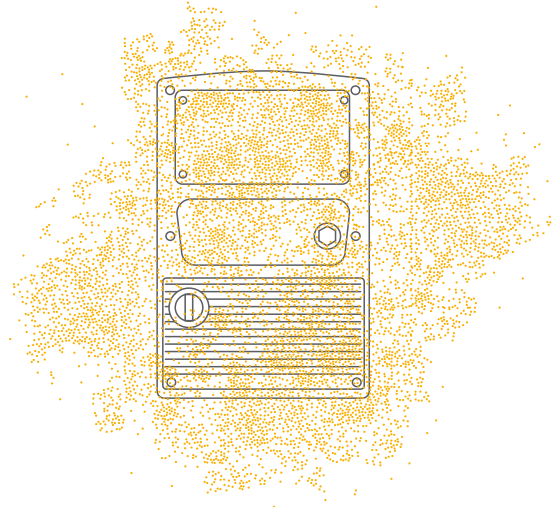
PB - Fillet Weld
S355 - THK 8 mm Welded from both sides



TEST

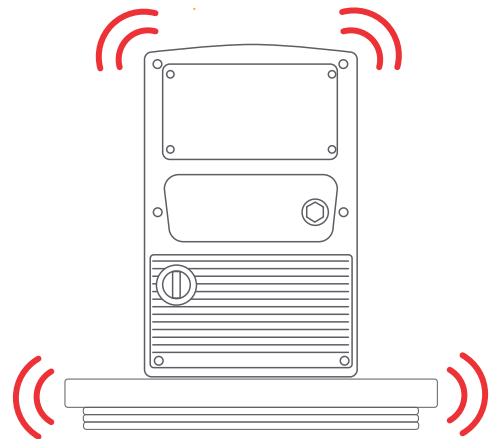
Dust Test

An initial, very strict test, to ensure safety of all electronic parts of the power source. Champ Pulse 503 is fully insulated from the ingress of dust due to grinding operations or to other reasons, which could cause the electronic components to fail.



Vibration Test

To ensure the structural stability of the inverter and to allow the welding machine to be used in any environment, including those subjected to vibrations, such as on trucks, ships or other unstable structures. Each internal component of Champ Pulse 503 is securely fixed and free from vibrations.

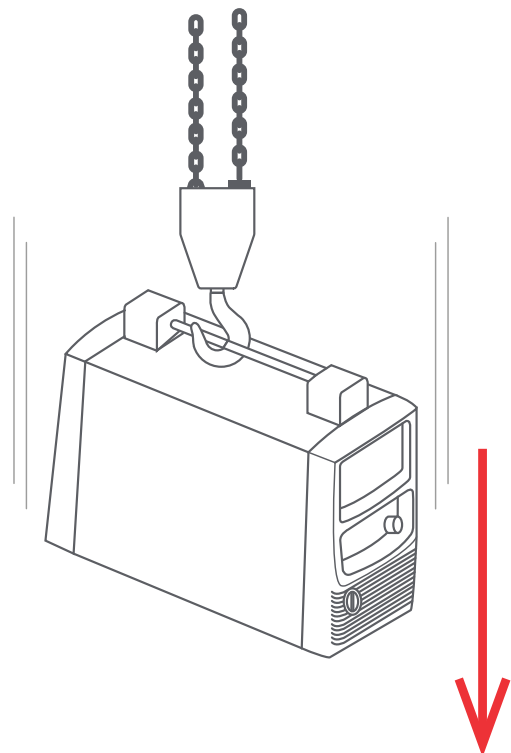


Safety Tests

Champ Pulse 503 has brilliantly passed all safety tests: IP tests, drop tests and stability tests on an inclined plane. Total safety is ensured in any working conditions.

Welding Test

Champ Pulse 503 is totally reliable, having been subjected to welding tests for over 3000 hours. Its performance is guaranteed in any working location and in any part of the world, in adverse environments with different temperatures and ambient conditions.





TECHNICAL DATA

TECHNICAL DATA



| CHAMP PULSE 503 | | | | | | | | | |
|---------------------|--------------------------|------|------|-----------|------|------|----------|------|------|
| | 3x415Vac ± 15% @ 50-60Hz | | | | | | | | |
| | T32A | | | | | | | | |
| | MIG-MAG | | | TIG | | | MMA | | |
| % _{0 40°C} | 30% | 60% | 100% | 35% | 60% | 100% | 30% | 60% | 100% |
| I_2 | 500A | 430A | 400A | 500A | 450A | 420A | 500A | 430A | 400A |
| % _{0 25°C} | -- | -- | 100% | -- | -- | 100% | -- | -- | 100% |
| I_2 | -- | -- | 500A | -- | -- | 500A | -- | -- | 500A |
| I_2 | 10A-500A | | | 10A- 500A | | | 10A-500A | | |
| U_0 | 10/62V | | | | | | | | |
| $P_{I, MAX}$ | 25,5kVA – 22,3 kW | | | | | | | | |
| IP | 23 | | | | | | | | |
| | 460x990x1370mm | | | | | | | | |
| | 110Kg | | | | | | | | |

| FEEDLITE 403 | |
|--------------|---|
| | 42VDC |
| P_{MAX} | 120W |
| r.p.m | 270 |
| | 1,5 - 24,0 m/min |
| | n°4 (ø37 mm - ø19 mm) Fe 0,6 - 1,6 mm Al 0,8 - 3,2 mm FCW 1,0 - 3,2 mm |
| | 200 mm (5 kg) - 300 mm (15 kg) |
| IP | 23 |
| | 680 x 280 x 380 mm |
| | 15,8 kg |

NOTES



A series of horizontal dotted lines spanning the width of the page, intended for writing notes.

NOTES



A series of horizontal dotted lines spanning the width of the page, intended for writing notes.

NOTES



A series of horizontal dotted lines spanning the width of the page, intended for writing notes.



ADOR WELDING LIMITED

Survey No. 147/2B+3, Akurdi, Near Khandoba Mandir,
Chinchwad, Pune - 411 019, Maharashtra, India.

☎ 1800 233 1071 /+91 20 40706000

✉ care@adorians.com

🌐 www.adorwelding.com